

Welcome to SHERIDAN, WYOMING

WITH A POPULATION of 17,940 people and six constituent neighborhoods, Sheridan is the sixth largest city in Wyoming. Bedroom communities in Sheridan County include Ranchester, Dayton, Big Horn, Story, Arvada, Clearmont and Ucross, for a total population of approximately 30,485.

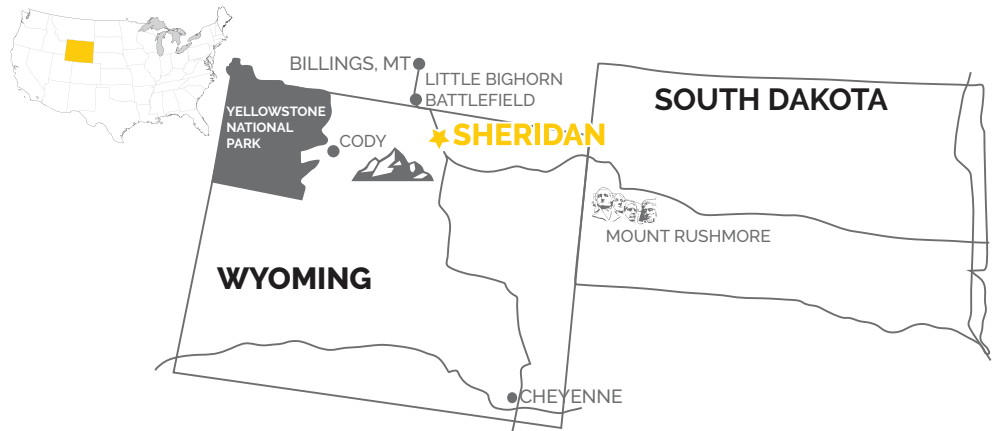
More than 31% of adults working in Sheridan County have obtained at least a bachelor's degree. The American average is 32.1%. Sheridan's workforce is spread across a diverse landscape of industries, including: educational, health and social services (16.7%); agriculture, forestry, fishing and hunting and mining (11.1%); construction (11.5%); arts, entertainment, recreation, accommodation and food services (13.8%).

Residents report some of the shortest commute times in the country at an average of 14.2 minutes per day.

Sheridan is home to dozens of foundations, nonprofit groups and community organizations, with a strong focus on education, the arts, senior care, recreation and history.

Sheridan sits at the base of the Bighorn Mountains at an elevation of 3,742 feet. Sheridan is 130 miles southeast of Billings, Montana (two-hour drive), 430 miles north of Denver, Colorado (six-hour drive) and 204 miles east of Yellowstone National Park (four-and-a-half-hour drive).

Sources: city-data.com and U.S. Census 2019 estimates.



LOCATION

Sheridan is adjacent to Interstate 90 and 30 miles from the Interstate 25 interchange.

TRANSPORTATION

Air, bus, truck and rail — all are available in Sheridan County.

TELECOMMUNICATIONS

State-of-the-art connectivity

UTILITIES

Low utility rates

LABOR

Sheridan County has an educated, hard-working, stable, mature workforce.

EMPLOYEE TRAINING

Sheridan College partners with local businesses to create training programs. The Wyoming Department of Workforce Services provides a number of programs for training funds.

BUILDINGS AND SITES AVAILABLE

The Sheridan High-Tech Business Park and the Airport Business Park are two options for companies looking to relocate.

Plus, the state of Wyoming has no state corporate income tax, no state personal income tax, no state inventory tax and no estate tax.

Sheridan County
sales tax:
6%

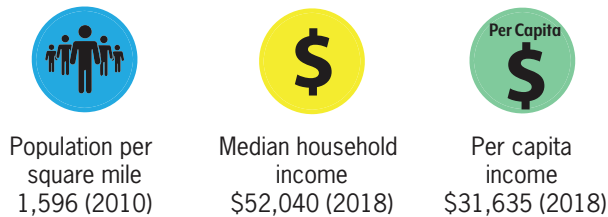
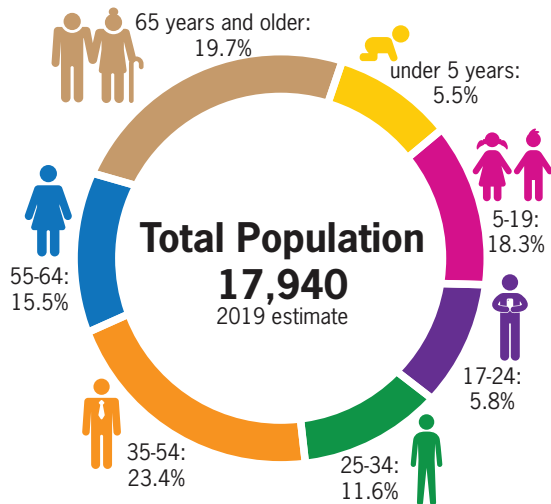
Mean travel time to
work for workers ages
16+ (2012-2016):
13.74 minutes

Annual residential
property tax (based on a
\$250,000 property within the
city of Sheridan):
\$1,352

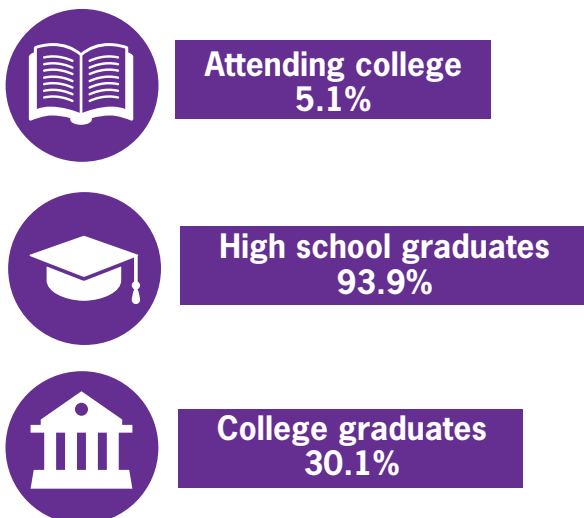
Annual commercial
property tax (example
based on a \$1,000,000
property within the city of
Sheridan):
\$6,793

SHERIDAN CITY

POPULATION AND AGE DISTRIBUTION

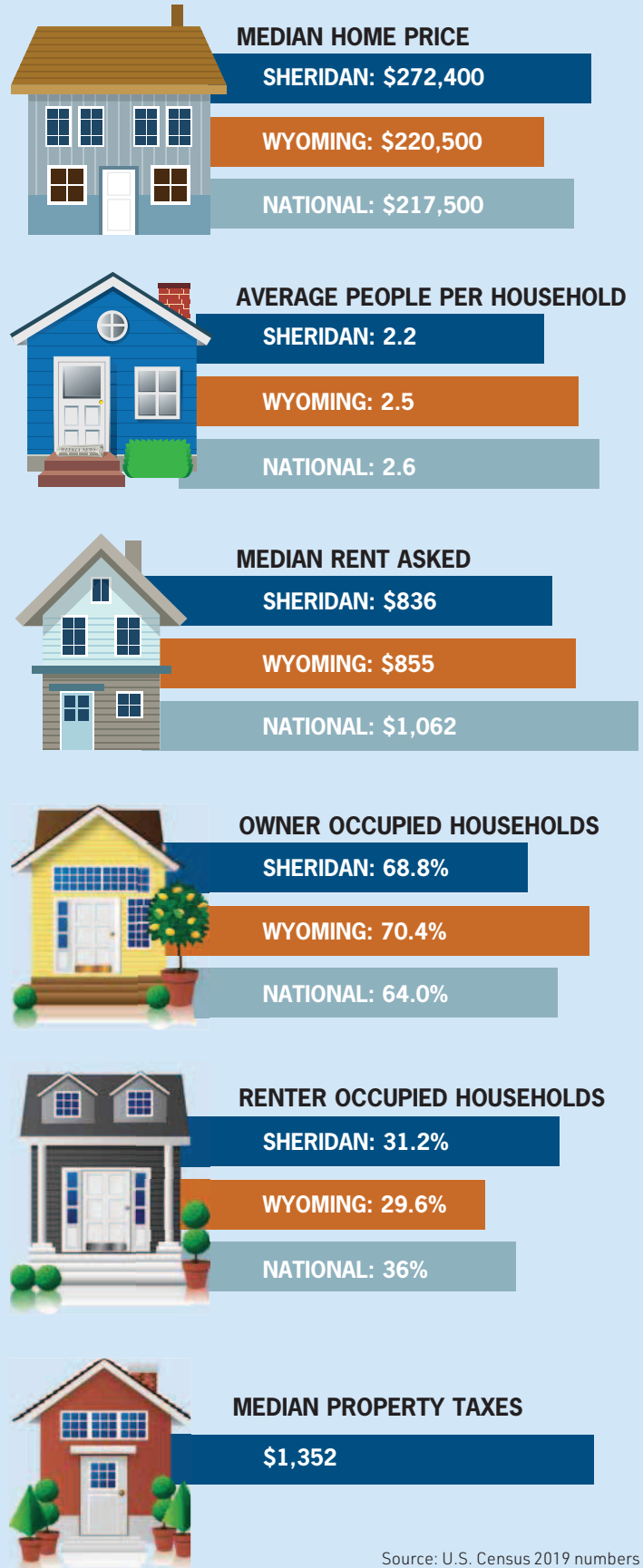


EDUCATIONAL ATTAINMENT OF ADULTS



Sources: Wyoming Department of Education and Wyoming Department of Administration & Information, Economic Analysis Division

SHERIDAN HOUSING INFORMATION



Source: U.S. Census 2019 numbers

SHERIDAN'S LIVABILITY

Sheridan ranks No. 1 in Wyoming in terms of livability.

- ✓ Lots of local amenities
- ✓ High income per capita
- ✓ High graduation rates
- ✓ Low crime rates

STATE TAX

- No state corporate income tax
- No state inventory tax
- No state personal income tax
- No estate tax



SHERIDAN COUNTY

POPULATION
30,485

MEDIAN AGE
42.3

HIGH SCHOOL GRADUATION RATE
96.72%

LIVABILITY COMPARISON

| | | |
|-----------|-----------|-----------|
| 82 | 71 | 67 |
| SHERIDAN | WYOMING | USA |

SHERIDAN COST OF LIVING INDEX

| INDEX | SHERIDAN | WYOMING | NATIONAL |
|------------------------|----------|---------|----------|
| Goods & services index | 90 | 90 | 100 |
| Groceries index | 101.8 | 99.2 | 100 |
| Health care index | 130.8 | 131.3 | 100 |
| Housing index | 104.5 | 99.1 | 100 |
| Transportation index | 65 | 77.6 | 100 |
| Utilities index | 97.2 | 94.3 | 100 |

In the event that the cost of living data was unavailable for this city, estimates based upon nearby cities were used. Each cost of living index is based on a national average of 100. If the amount is below 100, it is lower than the national average. If the amount is above 100, it is higher than the national average.

A general summary of the cost of living index in Sheridan, is shown above. Compared to the state average of Wyoming the cost of living index in Sheridan is 99, which is 2 percent higher than the average in Wyoming and compared to the national average it is 1 percent lower. The cost of living index is made up of several categories. These are transportation at 9 percent, utilities at 10 percent, goods and services at 33 percent, housing at 30 percent, groceries at 13 percent, and health care at 5 percent. The bulk of the cost of living index comes from the categories of goods and services and housing. If you look at everyday goods and services they can be a good indicator in a certain city of the general costs of goods there. In Sheridan goods and services come in at 9 percent higher than the average in Wyoming and are 3 percent lower than compared to the nationwide average.

CLIMATE

AVERAGE HIGH TEMPERATURES:

February: 38
July: 87
November: 46

AVERAGE LOW TEMPERATURES:

February: 12.8
July: 52.9
November: 19

ANNUAL RAINFALL:

12.9 inches

ANNUAL SNOWFALL:

63.6 inches

AVERAGE WIND SPEED:

7.1 miles per hour

Source: usclimatedata.com

RELOCATION CHECKLIST

DON'T LET a long list of to-dos prevent you from a fresh, new experience in a new place. With local support at the helm, settling into Sheridan County is a cinch. Here's a list of things to tackle before, during and after the big move.

✓ **PICK A REALTOR** to help you find a new home and sell your current house.

✓ **SORT THROUGH** every room and drawer of your existing home to clean and purge items.

✓ **HIRE MOVERS** if you aren't handling the transition yourself.

✓ **CONTACT YOUR CHILD'S OLD SCHOOL** to see what kind of information they need and to ensure records are transferred in a timely manner. Research schools in your new town and find the best fit for your children.

✓ **MAKE TRAVEL ARRANGEMENTS.** Do you need a hotel for a day or two? Are you flying? While movers may take care of your things, make sure you have plans for you and your family as well. Have pets? Make sure they are cared for during the move, too.

✓ **GATHER PACKING SUPPLIES** — tape, boxes, etc. — and start packing. Be sure to label boxes carefully so you can easily find stuff later.

✓ **CONTACT YOUR DOCTORS.** Get medical records for you and your family or have them sent to new physicians once you settle in. This applies to physicians, dentists, optometrists, etc.

✓ **CONTACT INSURANCE AGENTS** to find out if your move necessitates a change in medical, dental, vehicle or property insurance.

✓ **CONTACT UTILITY COMPANIES** in your current town and your new home to ensure disconnects and reconnects happen seamlessly.

✓ **CHECK IN WITH YOUR PHARMACY** and find a new one to ensure your medications are transferred to the new community.

✓ **RESEARCH AND FIND** a new plumber, electrician and other service providers.


✓ **SIGN UP FOR ACTIVITIES.** You're in a new town, get out and meet some folks!

✓ **CONTACT THE CHAMBER OF COMMERCE.** They can help connect you with resources and check the directory in the back of this magazine for the services you need.



If you're looking for a specific kind of business to help you in relocating, check the back of this magazine for the Chamber directory.

RELOCATION RESOURCES



Tyler Wood, left, and volunteer Shane Rosty unload Chloe Banderob's belongings into her new dorm Griffith House on the Sheridan College campus Friday, Aug. 21, 2020.

SHERIDAN TRAVEL & TOURISM

SHERIDANWYOMING.ORG

Visit Sheridan's official tourism website to learn more about what there is to do and see in the Sheridan area. Call 307-673-7120 or 888-596-6787 for more information.

SHERIDAN WORKFORCE CENTER

WYOMINGATWORK.COM

State of Wyoming's local employment service. Call 307-672-9775 for additional information.

SHERIDAN COUNTY CHAMBER OF COMMERCE

SHERIDANWYOMINGCHAMBER.ORG

The "front door" to the community. The website includes a listing of Chamber member businesses (potential employers), community directory, member job listings and a community calendar to help you get plugged in. Call 307-672-2485.

CITY OF SHERIDAN

SHERIDANWY.GOV

For news about city ordinances, city business initiatives, departments including water, trash and recycling service and community information, call 307-674-6483.

SHERIDAN COUNTY

SHERIDANCOUNTY.COM

For countywide government news, health and safety information, property and road information or operations and services, call 307-674-2900.

WYOMING GAME & FISH DEPARTMENT

WGFD.WYO.GOV

For information on hunting, fishing and outdoor recreation, call 307-674-2900.

U.S. FOREST SERVICE

FS.USDA.GOV/BIGHORN

For information on the Bighorn National Forest, including maps, trail information and camping, call 307-674-2600.